

# SADP Software User Manual

The SADP software is only used for searching IP Cameras and setting their IP addresses and related parameters in LAN.

## Software Installation

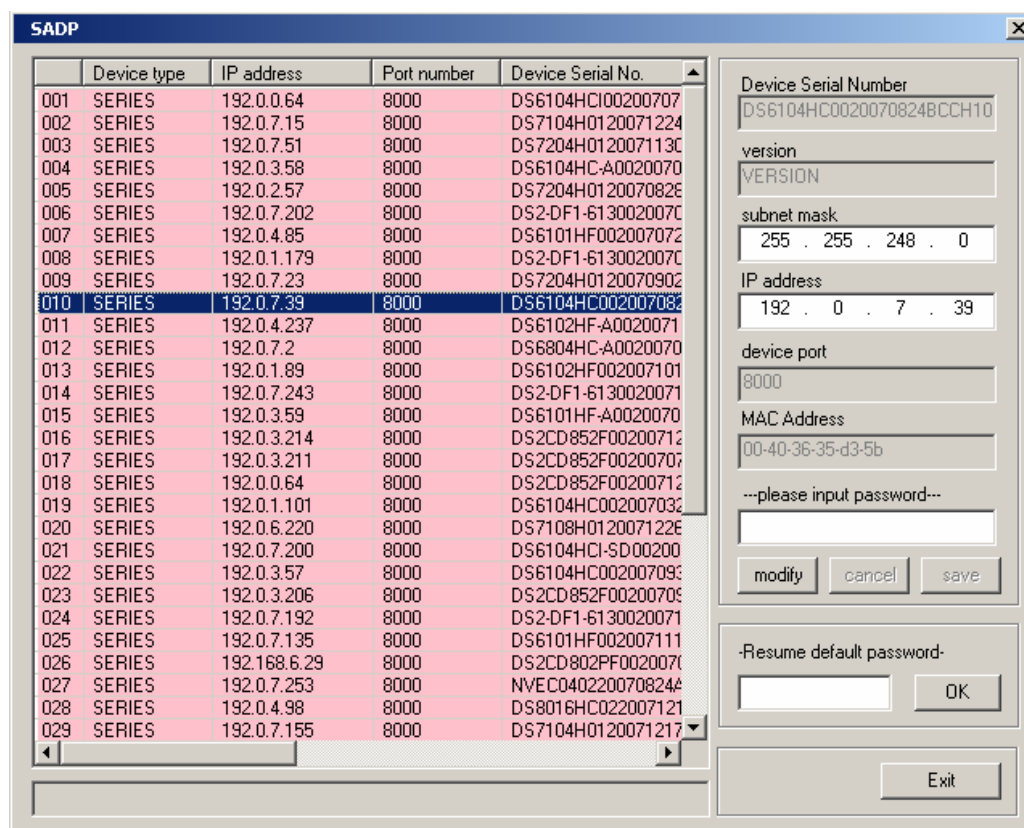
Before you run SADP software on Win2000/XP, you must install Wincap software first.

After you installed Wincap, you can run SADP, without software installation, by clicking its program (sadpdlg.exe) directly.

## Function introduction and operations

When you enter SADP software, system will search IP Cameras in LAN automatically, no matter their IP addresses are in the same network or not.

The results will be listed as below:



**Figure1: Result of searching**

In this screen, you can select one IP camera to set its IP address and related parameters, including IP address and subnet mark. After that you can press "Modify" and enter user and password to effect your settings.

## Frequently Asked Questions

1. When running SADP software, the equipment list does not show all IP Cameras in LAN.

**Reason:**

Some routers will filter SADP datagram. HUB or Switch is recommended to be used for connection.

2. I forget the password, how can I restore my setting?

If you want to restore the password, you need provide us the series number of your device and we will send you a secure code, and then can input the secure code in the "Resume default password" option and click "OK".